



An Introduction to Gulfstream Aerospace

FACC Meeting

08 November 2018

Gulfstream History

- **1958 Gulfstream I first flight**
 - First purpose built business aircraft
- **1967 Gulfstream facility built in Savannah**
 - GII and subsequent large cabin aircraft built in Savannah
- **1978 Grumman sells Gulfstream to Allen Paulsen**
- **1980 GIII enters into service with winglets**




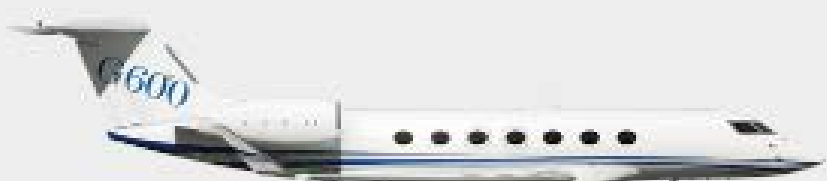
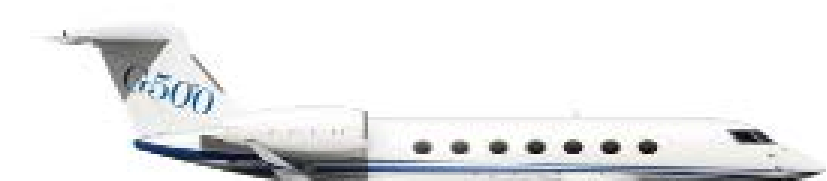
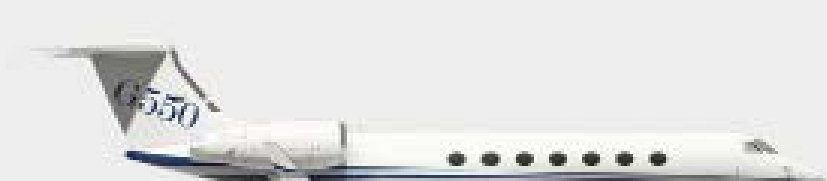

Solid Foundation of Gulfstream

- **1987 Gulfstream IV entry into service**
 - First all glass cockpit
- **1997 Gulfstream V**
 - First ultra-long-range airplane
 - Winner of the Robert J. Collier Trophy
- **1999 Gulfstream acquired by General Dynamics**
- **2001 Acquisition of Galaxy Aerospace**
 - Astra SPX becomes the G100
 - Galaxy becomes the G200



Over 50 years of business aviation experience since the introduction of the Gulfstream I

Gulfstream Fleet

	Aircraft	Long-Range Cruise Speed	Maximum Range *	MMO	Passengers Sleeps
	G650ER™	Mach 0.85	7,500 nm 13,890 km	Mach 0.925	Up to 19 Up to 10
	G650™	Mach 0.85	7,000 nm 12,964 km	Mach 0.925	Up to 19 Up to 10
	G600™	Mach 0.85	6,500 nm 12,038 km	Mach 0.925	Up to 19 Up to 9
	G500™	Mach 0.85	5,200 nm 9,630 km	Mach 0.925	Up to 19 Up to 8
	G550™	Mach 0.80	6,750 nm 12,501 km	Mach 0.885	Up to 19 Up to 8
	G280™	Mach 0.80	3,600 nm 6,667 km	Mach 0.85	Up to 10 Up to 5

New Gulfstream Flagship - The Gulfstream G650

The Gulfstream G650 – A clean-sheet design which incorporates the latest technologies



State-of-the-art Manufacturing

- New manufacturing facility
- Advanced automation
- Bonded fuselage and increased use of composites

Most advanced cockpit and systems

- PlaneView® II, EVS II, SV-PFD
- Fly-by-wire flight control system
- New Rolls Royce BR725
- All new certification

The Newest Gulfstream – the G500 and G600



From McAlpine to Gulfstream UK

In 1957 the company expanded its fleet and moved from Fair Oaks to Luton.



Luton Hangar 102 added in 1974



Gulfstream Aerospace UK

- 2003 – Gulfstream Aerospace Ltd established – operating from H63/H102
- 2011 – Moved to Hangar 125



Gulfstream Luton



Key Facts – Gulfstream UK

- Total headcount has grown to over 285 technical and support staff.
- Certified European Aviation Safety Agency (EASA) and US Federal Aviation Administration (FAA) Part-145 repair station.
- Strong contingent of Flight Safety International trained B1(mechanical) and B2 (Avionics) engineers experienced in servicing Gulfstream aircraft.
- Gulfstream UK personnel service approximately 2,000 aircraft yearly at this facility or on road trips.
- Regions supported are Europe, Africa and the Middle east.
- Luton holds 20 Foreign Authority approvals

Capabilities

- All major inspections
- Avionics upgrades and modifications
- Interior modifications
- Major structural modifications/repairs
- Spare part exchanges and OTC sales
- Drop-in and AOG road trip support
- EASA Part-21 Design Organization Approval
- CAMO (Continued Airworthiness Management Organization) services



FAST Team Support in EMEA & Asia



To supplement the UK site and to better serve a growing fleet, the company has located FAST team members conveniently situated at key locations in Europe, Middle East & Asia. These Flight Safety trained engineers work under the Luton repair Station and can travel to the needed location once activated. They are supplemented by the Luton team with any required material or additional manpower support, when needed.

Location - FAST Engineers

- Athens, Greece 2
- Zurich, Switzerland 3
- Paris, France 1
- Nice, France 1
- Barcelona, Spain 1
- Kiev, Ukraine 1
- Dubai, UAE 1
- Hong Kong 1
- London – Gulfstream Eng staff
- Far East Presence
- Bangkok, Thailand
- Hong Kong 1





Gulfstream, Farnborough, UK

Why Farnborough?

- The Luton site has become increasingly busy in recent years along with the airport, which has been increasingly congested with low-fare carrier traffic.
- The anticipated growth of the Gulfstream fleet has driven the need for continued growth and additional capacity across the entire European Gulfstream service centre network.
- Farnborough is a London gateway airport dedicated exclusively to business aviation. Frequented by many of our operators, it offers amenities that complement our brand, with the space required for our current construction plans and future growth.
- Farnborough is the birthplace of British aviation - the UK's first airfield in aviation history and home to the country's first powered flight in 1908.
- From the earliest days, Farnborough has been a centre of military and civil aviation research.

Gulfstream Farnborough

- The new Farnborough hangar will primarily be used for the maintenance, repair and overhaul of Gulfstream aircraft.
- The works inside the hangar will include scheduled and unscheduled maintenance.
- Gulfstream's operation would bring around 500 further jobs to the airport, with it expected that the majority of staff would be hired from the local area, with Gulfstream seeking to engage with the Rushmoor Employment Skills Zone ('RESZ') regarding the employment of local people.
- Gulfstream have liaised with HCC and have meetings set up with two local colleges; Farnborough College of Technology ('FCOT') and Fareham College.
- It is anticipated that Gulfstream would collaborate with the colleges, enrolling technical apprentices between the colleges, to train up aviation technicians for the future.
- Supporting local aviation businesses – e.g. NDT, interior refurb, machining, heat treatment, paint, cleaning, local supply chain and many more.

Design Update



North East View



North View

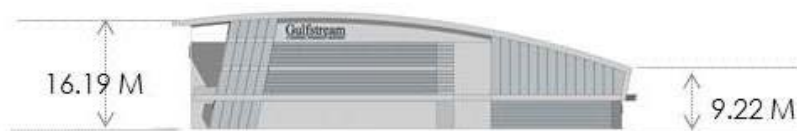


South East View – Night



South West View

East View



WEST ELEVATION

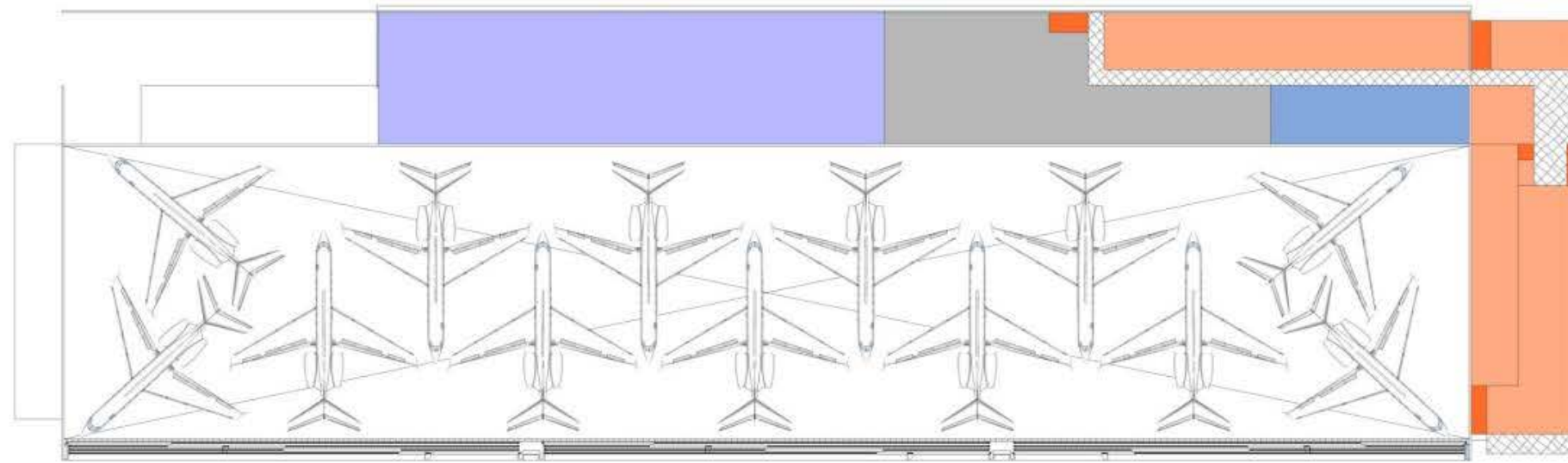


EAST ELEVATION

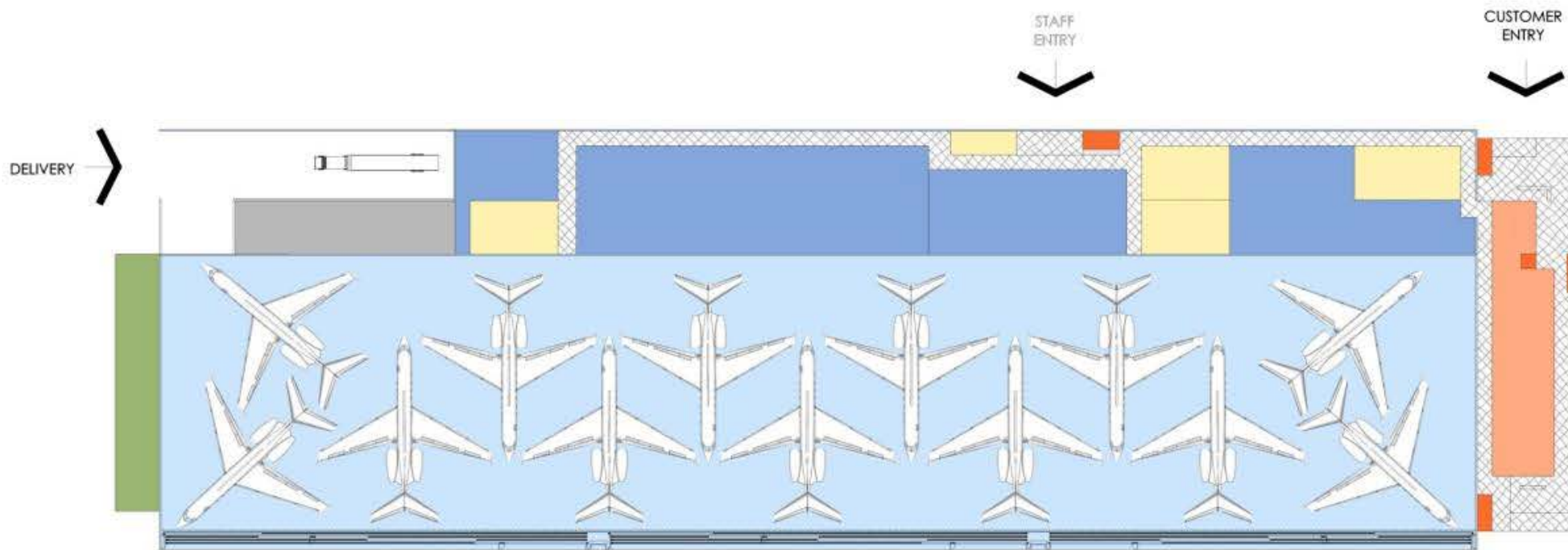


SOUTH ELEVATION (AIR SIDE)

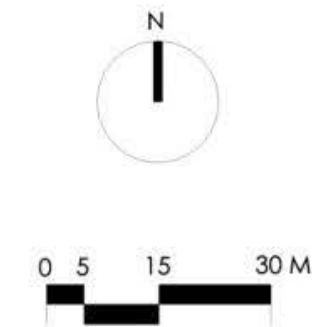
Floor Plan



- HANGAR
- HANGAR WORKSHOPS/STORAGE
- HANGAR SUPPORT
- BLDG. SUPPORT
- STAFF AREAS
- OFFICE AREAS
- VERTICAL CIRCULATION
- CIRCULATION
- UNASSIGNED SPACE



GROUND FLOOR PLAN



Next steps...

- Construction to commence April 2019.
- Completion scheduled for June 2020.
- Interim plan to occupy Hangar 2, Bay 6 at Farnborough Airport. Q2 2019, to ease the transition.



Thank you for your attention!



Gulfstream[®]
A GENERAL DYNAMICS COMPANY