

# Farnborough Airport Fund Annual Report

## Grants awarded in 2020

### Summary of grants awarded

**Tower Hill Primary School** - £10,000

Environmental classroom room ^

**The Species Recovery Trust** - £3,000

Conserving the rare heathland plants of the Farnborough heaths

**The Wavell School** - £12,387

Community / Year 7 garden \*

**Prospect Estate Big Local (PEBL)** - £6,812

PEBL benches

**Friends of Aldershot Military Museum** - £5,000

Heritage trails signage (additional funding) \*

**Farnborough Grange Nursery and Infant Community School** - £4,200

Forest School \*

**Rushmoor Voluntary Service** - £6,000

Blooming Marvellous supported gardening programme \*

**Parkside (Aldershot & District Learning Disability)** - £1,200

Garden project \*

**Basingstoke Canal Society** - £5,000

Signage for the Basingstoke Canal \*

**Greater Rushmoor Nepali Community** - £5,000

Integrated community garden in Aldershot \*

**Guillemont Junior School** - £4,700

Guillemont Biodiversity Project \*

**Total awarded for 2020: £63,239**

\* projects still to be completed

^ awaiting feedback

## Feedback from the projects

### The Species Recovery Trust - £3,000

Conserving the rare heathland plants of the Farnborough heaths



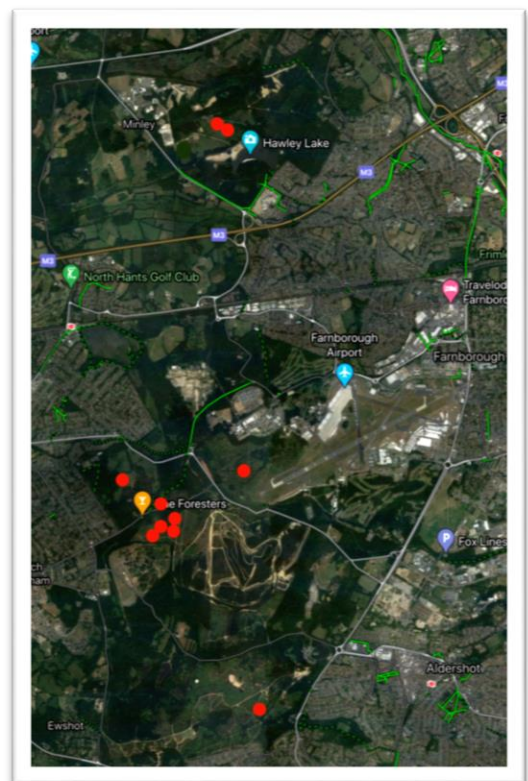
“The project focussed on the monitoring of rare plant species, in particular the populations of Marsh Clubmoss which are severely under threat in the region. This species is an indicator of healthy damp heath and mire, a European protected habitat in Hampshire and across the UK.

This generous funding grant has provided the opportunity to complete detailed site surveys and light habitat management. Monitoring has been vital in supporting the existing information collected by the Species Recovery Trust, furthering our understanding of appropriate

management and helping to identify the potential causes of elevated levels of atmospheric nitrogen within the south-east.

Analysis of this data, along with historical information collected over the last 10-20 years, has shown a marked decline of Marsh Clubmoss across the south-east, which is thought to potentially be a result of increased atmospheric pollution, given the good conditions found at many of the sites. Continued long term monitoring will allow further conclusions to be drawn.

In addition, the funding has helped to identify successful management practices which are now being implemented at other sites in Surrey and has allowed small scale habitat management around some of the populations to reduce competition from other plants.



Due to Covid-19 restrictions, we were unable to run an open day, but were able to utilise the time to spend more days in the field. The heathlands are a valuable recreational and educational tool for the public, a resource much needed, particularly given the epidemic of Covid-19. The continued monitoring of these areas will inform appropriate management of these declining habitats, ensuring the continued enjoyment of the local community, now and into the future.”

## Prospect Estate Big Local (PEBL) - £6,812

### PEBL benches

“The project was to purchase and install 12 benches on the Prospect Estate to encourage walking, wellbeing, community interaction and integration.

The benches can be seen being used every day and enjoyed by all ages of the Community from children to the 6<sup>th</sup> Form College Students to the elderly. Conversations are started and enjoyed that would not normally have been possible.



Despite being a relatively cheap project, it is regularly spoken about as one of PEBL's best achievements for the Prospect Community. The bench locations were carefully selected and add an aesthetic dimension as well as a practical purpose for the Community.

PEBL recently conducted an extensive estate wide survey involving all 2000 homes in the PEBL area. The feedback for the benches was unanimously positive:

The nicely laid new benches are great for walkers and the environment

It would be good to have more seating to make it easy to chat and have a rest

The Benches are 'a BIG PLUS' for the Estate

The benches are a lovely addition to the area and have brightened up the whole estate. It's fantastic to see them being used so much. They look good and the locations where they have been positioned are ideal

One very pleasing outcome has been despite the benches having been installed for some time now, there have been zero reports of antisocial behaviour or vandalism of them which may indicate an appreciation that we had hoped for.”

**Hampshire Cultural Trust - £15,000 (awarded in 2019)**

‘Shared Spaces, Connected Communities’ – installation of a World War II assault course replica at Aldershot Military Museum

“Shared Spaces, Connected Communities led to the regeneration of Aldershot Military Museum’s outdoor area with the installation of a replica World War II assault course, picnic shelter and interpretation panels. The specific aims of the project were to engage local military and non-military families, widen Aldershot Military Museum’s current offer and improve visitor experience.

The assault course has reinvigorated a previously unused area of the museum, adding a further interactive element to the visit with an outdoor focus, giving families and educational groups a unique experience in the local area.

The project was completed on time and the assault course was due to open on the 25<sup>th</sup> March. Unfortunately, this coincided with the coronavirus outbreak in the UK and lockdown period.

In addition, the project included installing interpretation boards and a giant stopwatch, to help visitors get a flavour of soldiers training regimes. We have also renewed, redesigned and installed new interpretation for all 18 military vehicles and pieces of artillery at the museum, further reinvigorating the outdoor space and improving the visitor experience.



The regeneration of this area has opened up further opportunities to engage with the local community. In March 2020, the museum was successful with a grant application to the Armed Forces Covenant Fund to create a Community Garden. This project will aim to engage men recovering from mental health illnesses in the local area, as well as encourage community cohesion between veterans, serving personnel and civilians from Rushmoor.

We will also continue to develop a programme of activities aimed at schools and uniformed youth groups, in partnership with the Royal Army Physical Training Corps Museum. In 2019-2020, we welcomed 714 children through our Schools Programme, which is an indication of who could benefit in the future. Again, we are hoping to grow this figure with the help of the outdoor area.

The comments from our Facebook announcement give an indication that the assault course will be an exciting addition to the local area, with lots of people indicating that they would like to visit. In addition, several comments pointed to the project being a positive addition to the museum site, for example: ‘We visited last weekend for the first time, the kids loved it, we liked it. Looking forward to going again and the kids trying out the assault course.’ ”